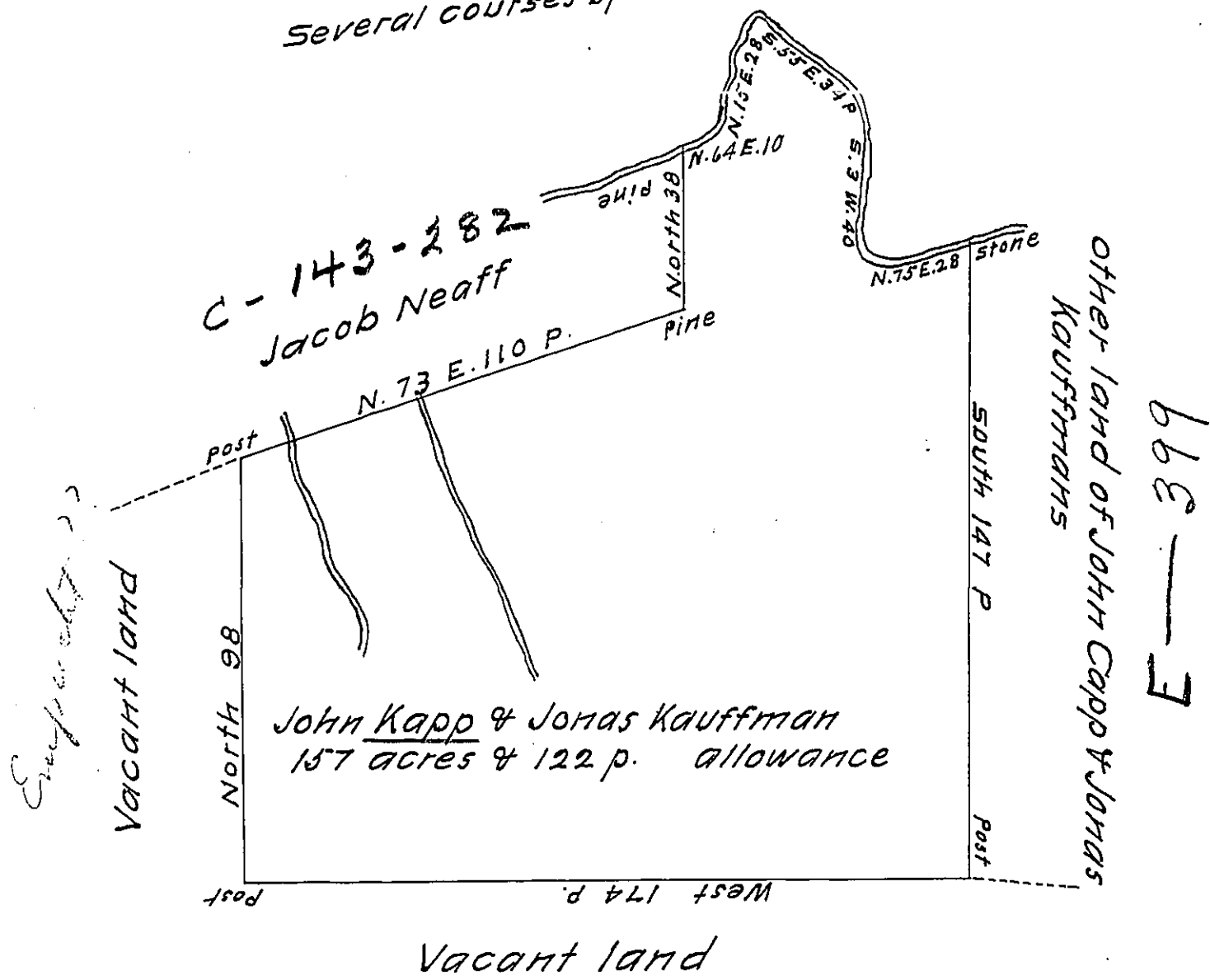


Several courses up Pine Creek 140 perches



By virtue of a warrant dated the twenty second day of February 1786 surveyed the 15<sup>th</sup> day May 1787 to John Capp and Jonas Kauffman the above described tract of land situate over the Broad Mountain in the County of Berks containing one hundred and fifty seven acres & 122 p and allowance of six p cent. for roads. &c.

Thomas Clark D. S.

To John Lukens Esquire  
 Surveyor General of Pennsylvania

IN TESTIMONY that the above is a copy of the original remaining on file in the Department of Internal Affairs of Pennsylvania, made conformably to an Act of Assembly approved the 16th day of February, 1833, I have hereunto set my Hand and caused the Seal of said Department to be affixed at Harrisburg, this nineteenth day of December 1911

*Henry Houck*  
 Secretary of Internal Affairs.